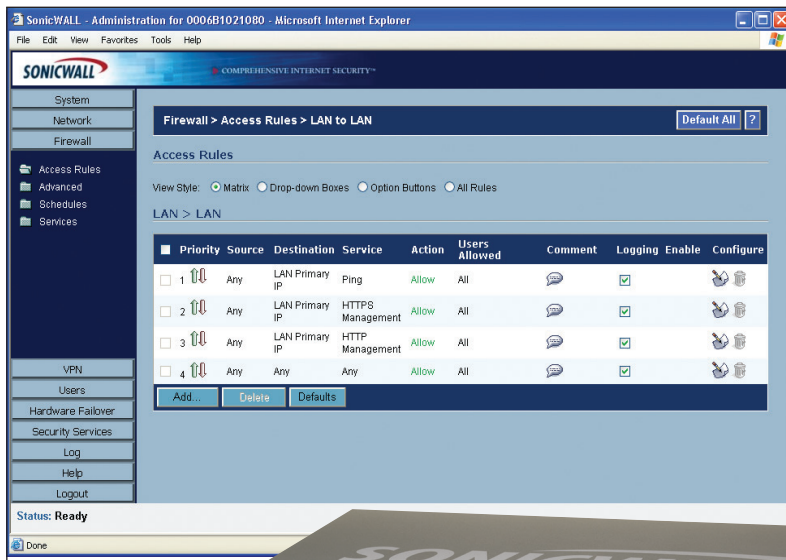


FIREWALL

SonicWALL Pro 4060

Enterprise security made easier to manage



Left: Despite offering a huge amount of functionality, the management interface on the SonicWALL Pro 4060 is one of the most intuitive we've come across

Below: The SonicWALL Pro 4060 is a flexible and highly scalable Internet security appliance with multiple Lan/Wan ports and a dedicated security ASIC to handle VPN encryption



Based on the recently updated SonicOS 2.0 operating system, the SonicWALL Pro 4060 is a highly scalable Internet security appliance, as is the slightly smaller Pro 3060 (£2,140 ex VAT). Both products are aimed at the enterprise market and can handle a variety of multiple Lan/Wan connections. They offer firewall and VPN (virtual private network) functionality with Wan port, VPN gateway, and whole appliance failover for maximum availability. Anti-virus and content filtering tools can be added and the management interface has been enhanced.

The same base hardware is used to power both the Pro 4060 and Pro 3060. This is delivered in a rugged 1U rackmount case, which has a 2GHz Intel processor with 256MB of Ram and 64MB of secure Compact Flash memory to hold the updateable firmware. A separate security ASIC is incorporated to offload encryption processing from the main CPU.

It's here that the two models differ in the amount of VPN

bandwidth each can support. Up to 75Mbits/sec can be handled on the Pro 3060 using standard 3DES or AES (advanced encryption standard), with support for 25 client connections (client software included) and up to 500 site-to-site policies. For networks with many VPN users, the Pro 4060 raises this to 190Mbits/sec, with support for 1,000 client sessions and 3,000 site-to-site VPN policies.

Firewall performance is the same on both products, at more than 300Mbits/sec and 500,000 concurrent connections depending on configuration. Six auto-sensing Fast Ethernet ports are built into the appliance. One is dedicated to Lan connectivity, while another provides a dedicated Wan port. The other four can be configured to provide extra Lan/Wan bandwidth or create custom demilitarised zones (DMZs) for Internet-facing servers. Custom Lan zones can be configured for internal security partitioning. Only three ports are activated on the Pro 3060 unless you pay £535 ex VAT for a software upgrade.

Other features of note include active/passive failover of paired firewalls and failover and load balancing of ISP services using the multiple Wan ports. The VPN gateway can be protected in this manner and there's also flexible policy-based network address translation (NAT) to cope with a wide range of addressing requirements. Additional anti-virus scanning and content filtering for web access and email can be added. The cost of these subscription-based services adds to the price, but locating them at the Internet gateway eases the processing burden otherwise placed on application servers.

Despite being packed with features, this is a very capable enterprise device, and no harder to install and configure than the smallest of SonicWALL firewalls. A serial console port is provided but most users connect the firewall to the Wan and use a remote browser.

Initially configured to be managed over a private subnet, the SonicWALL management interface is easy to navigate.

The latest is one of the best we've seen on a security appliance, with well partitioned feature and option sets, customisable display options and lots of online help. It's also very responsive. You can define management objects, such as network definitions, user groups, network services and schedules to help simplify repetitive tasks when defining security policies. Those objects can be modified later and policies that use them automatically updated.

The firewall in the Pro 4060 is an ICSA-certified stateful inspection implementation. It needs careful setup, but the object-oriented management interface helps. It's not so hot managing several appliances, but on a large network the GMS (global management system) software, available separately, can be used, and SNMP (simple network management protocol) management is supported.

Other security appliances may offer extras such as intrusion detection, which the Pro 4060 lacks. But it's a very flexible and expandable solution, and a good buy given the growing trend towards remote and mobile working in the enterprise space.

DETAILS

PRICE £4,494.38 (£3,825 ex VAT)

CONTACT SonicWALL
01344 668 090 www.sonicwall.com

SPECIFICATIONS

1U rackmount chassis, 2GHz chip with dedicated security ASIC • 256MB Ram • 6 x 10/100Mbits/sec Ethernet • Scalable up to 500,000 connections with 190Mbits/sec VPN performance using 3DES/AES algorithms
PROS Scalable; ASIC; Lan/Wan ports; web-based management
CONS Power supply; anti-virus and content scanning services extra

VERDICT

Raises the bar on security, availability and management

EASE OF USE ★★★★★
FEATURES ★★★★★
ENTERPRISE VALUE ★★★★★
OVERALL ★★★★★